

# MALAYSIA

Immerse yourself in the vibrant heart of Southeast Asia with a visit to Malaysia. Experience the beauty of pristine jungles, verdant national parks, and sun-drenched islands teeming with marine life. Explore modern landmarks and heritage buildings, while indulging in the rich blend of various cultures and traditions. Whether you're a history-lover, nature enthusiast, sun-seeker, or avid shopper, Malaysia has something for everyone. Embark on a journey to discover the country's many alluring attractions!



## Putrajaya

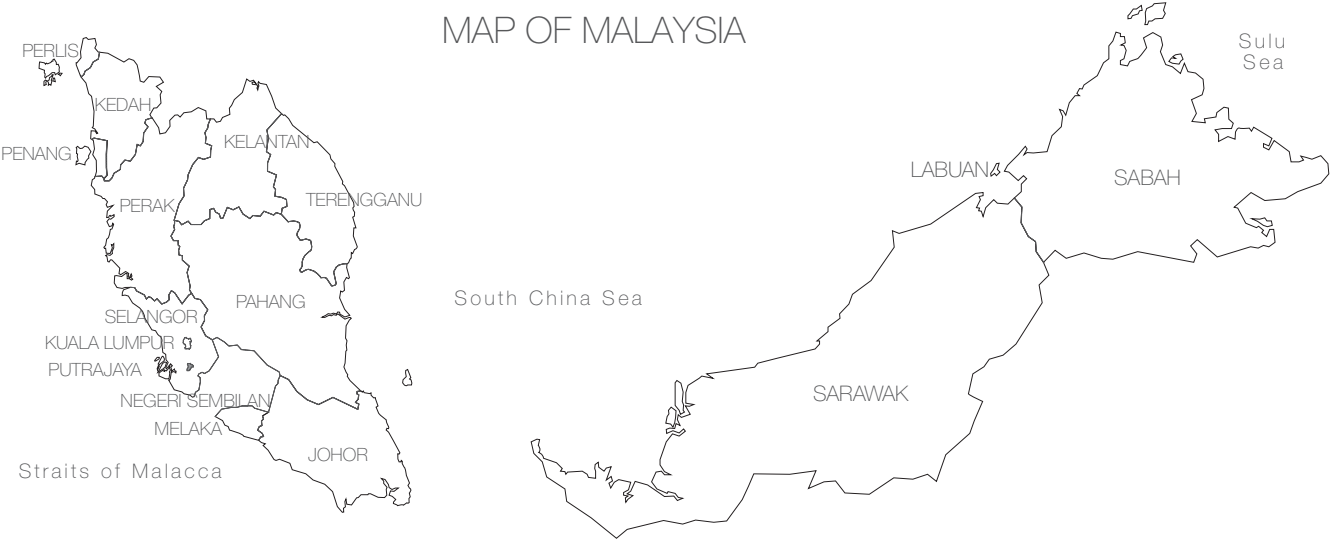
Hailed as the 'Intelligent Garden City', Putrajaya is the administrative federal capital of the country. It is situated within the Multimedia Super Corridor, about 25km to the south of Kuala Lumpur and 20km to the north of Kuala Lumpur International Airport (KLIA). The city comprises numerous government offices and tourist attractions that are built around a 400 hectare man-made lake and is linked by aesthetically designed bridges, parks and wetlands. Putrajaya is a symbol of Malaysia's dynamism and progress. Putrajaya was named in honour of the country's first Prime Minister, Tunku Abdul Rahman Putra Al-Haj. The word 'Putra' means prince while 'Jaya' means excellence or success.

### GT GETTING THERE

Putrajaya is situated about 28km from Kuala Lumpur and is easily accessible by road or train. The state-of-the-art KLIA Transit train provides easy access to Putrajaya from the KL Sentral Station (the city's transport hub). Visitors can also board the train from the Kuala Lumpur International Airport (KLIA) Terminal 1 and KLIA Terminal 2 (the main entry points to Malaysia). The trains operate daily from 5.00am until midnight. From KL Sentral, the journey takes only 20 minutes with one stop along the way; at Bandar Tasik Selatan. From KLIA, the distance to Putrajaya/Cyberjaya is about 15 minutes. Visitors who are driving can use the Maju Expressway (MEX Highway) which connects Putrajaya to Kuala Lumpur. The journey takes less than one hour. Alternatively, RapidKL buses provide frequent services to the city.

### GA GETTING AROUND

Nadi Putra buses ply almost every part of Putrajaya. The buses operate from Putrajaya Sentral, the main transport hub. Park and drive facilities are also available here. Alternatively, visitors can take a taxi from Putrajaya Sentral. Day tours are also available from Putrajaya Sentral.



### S SHOPPING

Putrajaya offers an interesting shopping experience. The main mall is Alamanda Putrajaya, which is situated in Precinct 1. It is the premier venue for shopping, dining and entertainment. Alamanda Putrajaya has over 160 tenants that are spread over two levels, making it easy for shoppers to move around the mall seamlessly. Anchor tenants are Parkson and Aeon Big. The Souq (situated at the Lower Level of the Putra Mosque) recreates the exotic experience of shopping in Persia. For a uniquely Malaysian experience, visit the numerous bazaars in Putrajaya. Some bazaars are held in public areas, while others are held in the vicinity of the government offices. Expect to find everything from food, fresh fruits to bags, accessories and clothes.



### D DINING

From alfresco eateries to air-conditioned restaurants, visitors are assured of a great variety of dining experiences. To try out local delights, head to Selera Putra Food Court at Precinct 1 or the Food Court at Precinct 8. To dine amidst a beautiful view, visit the Indus Putrajaya by Bora Ombak and Putrajaya Lake Club. Putrajaya FoodTrucks Hotspot offers more choices for foodies on-the-go. More dining is available in Galleria PUJ, Selera Laman Perdana Precinct 1, Ayer@8, Precinct 9 and Alamanda Putrajaya.

### P.O.I PLACES OF INTEREST



#### PUTRAJAYA WETLAND

Putrajaya Wetland is the first man-made wetland in Malaysia and the largest constructed freshwater wetland in the tropics. It is divided into two parts, Taman Wetland and a Lake Recreational Centre. Home to plants, invertebrates, frogs, reptiles, fish and water birds, the wetland is a must-see attraction for nature lovers and environmentalists. Don't miss the Lookout Tower, Nature Interpretive Centre, nature trails and flamingo ponds.

[www.ppj.gov.my](http://www.ppj.gov.my)



#### PUTRAJAYA WETLAND ADVENTURE PARK

The Putrajaya Wetland Adventure Park is an adrenaline-filled park located in the Putrajaya Wetlands. Here, visitors will have a blast going down their 420m-long flying fox or scaling a 10m-high wall. Hardcore thrill-seekers will also get a chance to take a Leap of Faith, jumping off a four-storey-high wooden platform, as well as abseiling down a 13m vertical structure using just a rope. This park is perfect to make lasting memories amidst lush landscapes.

[www.ppj.gov.my](http://www.ppj.gov.my)



#### KOMPLEKS SERI PERDANA

Kompleks Seri Perdana is the official residence of the Prime Minister of Malaysia. Located on 42.5 acres of undulating and beautifully landscaped grounds, the building complex consists of three blocks with reception, banquet and residential facilities.

[www.pmo.gov.my/ms/kompleks-seri-perdana/#](http://www.pmo.gov.my/ms/kompleks-seri-perdana/#)



#### TAMAN BOTANI (BOTANICAL GARDEN)

Spread over an area of 92 hectares, this is the largest botanical garden in Malaysia. It is divided into three sections, namely flowers, ornamental plants as well as preservation/research. More than 700 species of plants from Malaysia and other parts of the world can be found here. In addition to attractions such as the explorers' trail, vine garden and palm hill, there is also a gift shop selling environmentally-friendly souvenirs

[www.ppj.gov.my](http://www.ppj.gov.my)



#### MOROCCAN PAVILLION

Located within the Botanical Gardens, the Moroccan Pavilion is designed to showcase the rich arts and architecture of Morocco. The master plan follows the Moroccan tradition of movement from the public to private realms through gardens. The water channel was designed to represent the link between the countries of Morocco and Malaysia. It makes a perfect background for photoshoot and filming.

[www.ppj.gov.my](http://www.ppj.gov.my)



#### PERDANA PUTRAJAYA

With its distinctive green dome, the Prime Minister's Office Complex has become an icon in Putrajaya. Built in 1997, the complex houses the offices of the Prime Minister, his Deputy as well as several other government departments and agencies. The complex incorporates various architectural influences, including European, Islamic and traditional Malay.

[www.ppj.gov.my](http://www.ppj.gov.my)



#### MASJID PUTRAJAYA (PUTRA MOSQUE)

Located next to Perdana Putra, this is the principal mosque in Putrajaya. Built with rose-tinted granite that gives it its distinctive colour, the mosque can accommodate 15,000 worshippers at one time. An interesting feature of the mosque is the Sahn or courtyard, which is landscaped with decorative water features to provide a soothing feel.

[www.ppj.gov.my](http://www.ppj.gov.my)



#### DATARAN PUTRAJAYA (PUTRA SQUARE)

Dataran Putra or Putra Square is located opposite Perdana Putra. The square is actually two concentric plazas, divided into star-shaped segments that represent the states in Malaysia. An interplay of paths, water channels, flower beds and trees makes the square a picturesque spot for visitors. The newest landmark here is the 22 m stainless steel signage of Putrajaya that has become a huge attraction for tourists and photography enthusiasts.



#### CRUISE TASIK PUTRAJAYA (LAKE CRUISE)

Visitors can embark on a leisurely cruise to take in the breathtaking sight of the city's landmarks. Two different modes of transportation are available, a passenger cruise boat, or gondola-like vessels that resemble a traditional Malay perahu. Daun is a luxury dining cruise boat that comes with the trimmings of a five-star restaurant, so passengers can dine in style while enjoying the view.

[www.ppj.gov.my](http://www.ppj.gov.my)



#### PUTRAJAYA BRIDGES

Putrajaya consists of eight signature bridges i.e Putra, Seri Perdana, Seri Saujana, Seri Gemilang, Seri Wawasan, Seri Bakti, Seri Bestari and Seri Setia. These bridges are built to link various parts of the city separated by the sprawling network of lakes. These bridges are popular among nature-lovers, photo buffs, joggers and cyclists especially at dawn or night when it is beautifully lit up.



#### TAMAN SAUJANA HIJAU

The 41-hectare Taman Saujana Hijau is located in the northwest corner of Putrajaya in Precinct 11, with unique landscapes using lush green conifers and pine trees offering a slightly less tropical feel for its visitors. The expansive park is divided into 3 zones: a European Garden, an Oriental Garden and an English Garden. The rolling hills and ridges also make this park a very popular place for runners and cycling enthusiasts.



#### TAMAN WARISAN PERTANIAN (AGRICULTURE HERITAGE PARK)

Located in Precinct 16, this park showcases Malaysia's commercial crops as well as agricultural practices. More than 170 different types of trees and plants can be viewed, including rubber, oil palm, cocoa, pepper, fruits, herbs and spices. Visitors can learn all about rubber planting and processing, and sample fresh fruits from the orchard.



#### MILLENNIUM MONUMENT

Standing at 68 m, this monument makes a commanding sight. It rises majestically from a 25-hectare park in Precinct 2. Constructed of solid metal, this national monument is uniquely shaped like an obelisk with etchings denoting important milestones and periods in the nation's history. At night, it serves as a beacon with lights projected at 360 degrees. It is visible from various locations in Putrajaya.



#### MASJID TUANKU MIZAN ZAINAL ABIDIN / MASJID BESI (TUANKU MIZAN ABIDIN MOSQUE)

Located in Precinct 3 opposite the Palace of Justice, this is the second principal mosque in Putrajaya. It was officially opened by the 13th Yang di-Pertuan Agong or King of Malaysia, Tuanku Mizan Zainal Abidin, in 2010. Built to accommodate 24,000 worshippers, the mosque employs "architectural wire mesh" and fine glass to create the illusion of a silvery white metallic structure.

[www.masjidtuankumizan.gov.my/v3/](http://www.masjidtuankumizan.gov.my/v3/)



#### ISTANA KEHAKIMAN (PALACE OF JUSTICE)

This imposing and majestic five-storey building houses the nation's Federal Court and Court of Appeal. Its design incorporates classical Islamic and Western design influences, creating an interesting facade. Its expansive courtyard has been the venue of many national events including the Colours of Malaysia cultural extravaganza.

[www.kehakiman.gov.my/ms](http://www.kehakiman.gov.my/ms)



#### NASYRUL QURAN COMPLEX

Nasyrul Quran Complex is the second largest Quranic printing centre in the world. It is developed on 5,514 acres of land in Precinct 14. The name Nasyrul Quran is inspired by the Arabic word which means 'the spread of the Quran'. This complex has exhibition galleries, a skills training area, meeting rooms, prayer room, cafeteria, as well as a viewing gallery of the printing process.

[www.nasyrulquran.com/tour-nasyrul-quran](http://www.nasyrulquran.com/tour-nasyrul-quran)



#### MARINA PUTRAJAYA

Situated adjacent to Putrajaya Water Sports Complex, Marina Putrajaya offers a wide range of watersports. Hover over the waters on a flyboard, experience stand up paddling on the lake and try the first water jetpack experience in Putrajaya or even ride an e-scooter around the lake. The watersport centre is located at Level B1, Marina Putrajaya.



#### TAMAN CABARAN (PUTRAJAYA CHALLENGE PARK)

Sprawling across 30 hectares of land, this park is touted to have the largest indoor climbing gym in Southeast Asia. The park offers climbing facilities and services for all levels of climbers. It is situated in Precinct 5.

[www.ppj.gov.my](http://www.ppj.gov.my)



#### PUTRAJAYA EQUESTRIAN PARK

Located in the southeast section of Precinct 5, the park is spread over 70 acres at the edge of the hilltop where the Putrajaya International Convention Centre is perched. The Equestrian Park provides a great environment for riders to hone their horse riding skills. It also offers activities such as horse riding lessons, outride, easyride and joyride coupled with escorted hacking and private photoshoot sessions with the beautiful horses. Stable tour is also available for public and students of all ages.



#### PUTRAJAYA INTERNATIONAL CONVENTION CENTRE (PICC)

Putrajaya International Convention Centre is Malaysia's largest convention centre. It features a unique design, based on the eye of Pending Perak or Malay royal belt buckle. Taking up an area of 135,000 sq m, this impressive convention centre has more than 49 halls and can accommodate more than 12,000 people.

[www.picc.com.my](http://www.picc.com.my)



# Malaysia

## Putrajaya

### Map & Guide



Your Free Copy



Scan for Interactive Digital Brochures

ebrochures.malaysia.travel



Published by  
**MALAYSIA TOURISM PROMOTION BOARD**  
(Ministry of Tourism, Arts and Culture Malaysia)  
9th Floor, No. 2, Tower 1, Jalan P5/6, Precinct 5,  
62200 Putrajaya, Malaysia  
Tel: 603 8891 8000 | Tourism Infoline: 1 300 88 5050 (within Malaysia only)  
Fax: 603 8891 8999 | E-mail: enquiries@tourism.gov.my

ALL RIGHTS RESERVED. No portion of this publication may be reproduced in whole or part without the written permission of the publisher. While every effort has been made to ensure that the information contained herein is correct at the time of publication, Tourism Malaysia shall not be held liable for any errors, omissions or inaccuracies which may occur.

PJMG (English) / IH / MS / PR  
September 2024

[www.malaysia.travel](http://www.malaysia.travel)



Follow us



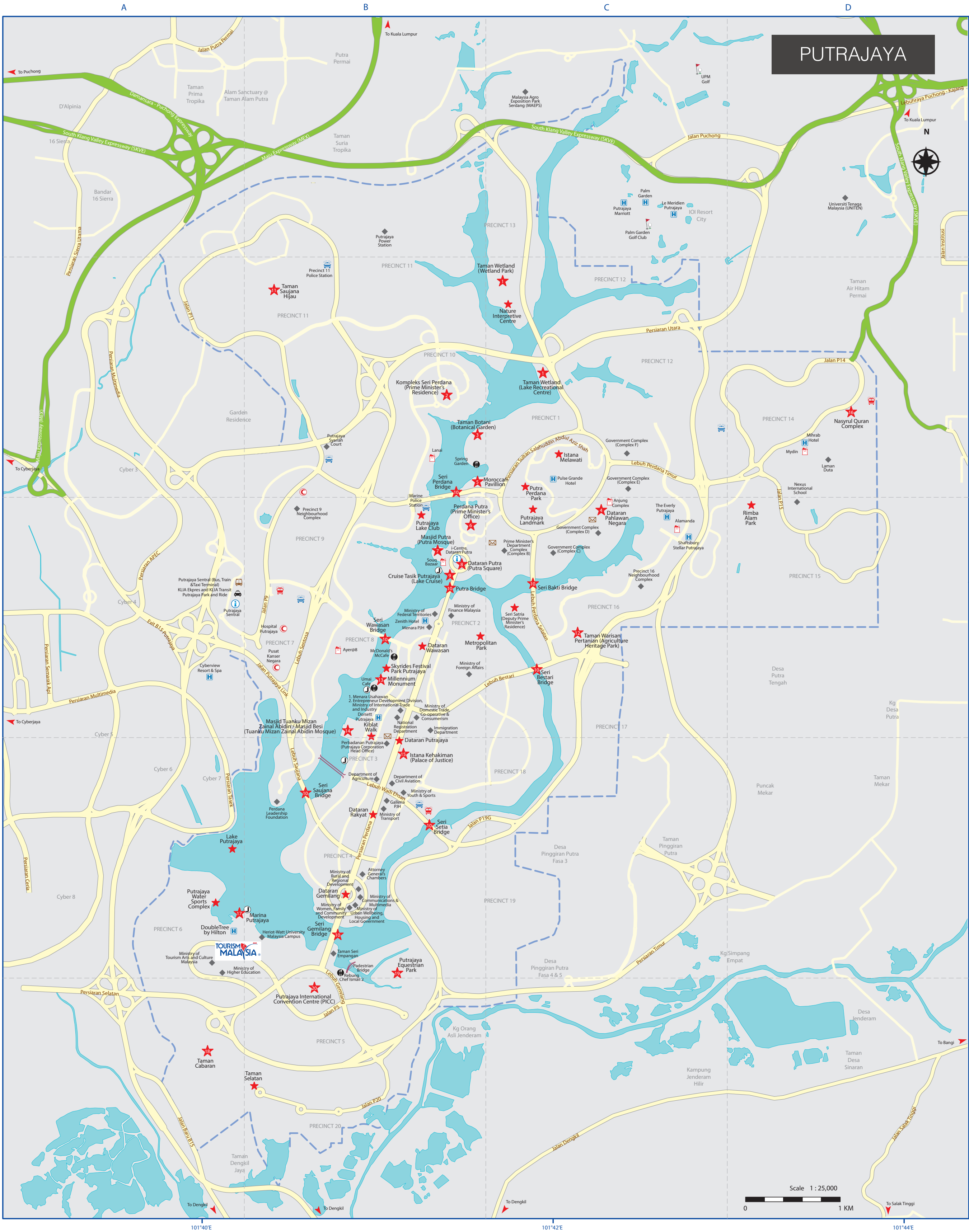
## USEFUL CONTACTS

### Tourist Information Centres

Tourist Information Centres  
TIC Meet & Greet Tourism Malaysia, KLIA  
Tel: 603 8776 4720

KLIA 2  
Tel: 603 8778 7080

KL Sentral  
Tel: 603 2272 5823



## Places of Interest

Cruise Tasik Putrajaya (Lake Cruise)	B3
Dataran Gemilang	B4
Dataran Pahlawan Negara	C2
Dataran Putra (Putra Square)	B3
Dataran Putrajaya	B4
Dataran Wawasan	B3
Istana Kehakiman (Palace of Justice)	B4
Istana Melawati	C2
Kiblat Walk	B3
Kompleks Seri Perdana (Prime Minister's Residence)	B2
Lake Putrajaya	A4
Marina Putrajaya	A4
Masjid Putra (Putra Mosque)	B3
Masjid Tuanku Mizan Zainal Abidin / Masjid Besi (Tuanku Mizan Zainal Abidin Mosque)	B3
Metropolitan Park	B3
Millennium Monument	B3
Moroccan Pavilion	B2
Nature Interpretive Centre	C2
Perdana Putra (Prime Minister's Office)	B3
Putra Bridge	B3
Putra Perdana Park	C2
Putrajaya Equestrian Park	B4
Putrajaya International Convention Centre (PICC)	B5
Putrajaya Lake Club	B3
Putrajaya Landmark	C3
Putrajaya Water Sports Complex	A4
Rimba Alam Park	D3
Seri Bakti Bridge	C3
Seri Bestari Bridge	C3
Seri Gemilang Bridge	B4
Seri Perdana Bridge	B2
Seri Satria (Deputy Prime Minister's Residence)	C3
Seri Saujana Bridge	B4
Seri Setia Bridge	B4
Seri Wawasan Bridge	B3
Skyrides Festival Park Putrajaya	B3
Taman Botani (Botanical Garden)	B2
Taman Cabaran	A5
Taman Saujana Hijau	B2
Taman Selatan	B5
Taman Warisan Pertanian (Agriculture Heritage Park)	C3
Taman Wetland (Wetland Park)	C2
Taman Wetland Lake Recreational Centre	C2
Nasyrul Quran Complex	D2
Putrajaya Challenge Park	D5

## Dining

Alamanda	C3
Ayer@8	B3
D'Empangan Undang Galah	B4
Indus Cafe	A4
McDonald's McCafe	B3
Putrajaya Seafood Restaurant	B2
Umai Cafe	B3
Rebung Chef Ismail 2	B4

## Facilities

Ferry Terminal	B3
Heriot-Watt University	B4
Hospital Putrajaya	B3
Lanai	B2
Marine Police Station	B3
Pedestrian Bridge	B4
Pusat Kanser Negara	B3
Putrajaya Police Station	B2, B3, B4, C2
Putrajaya Sentral	A3
KLIA Ekspres and KLIA Transit	
Bus & Taxi Terminal	
Souq Bazaar	B3

## Tourist Information Centre

i-Centre, Dataran Putra	B3
-------------------------	----

## Hotel

Dorsett Putrajaya	B3
Zenith Hotel Putrajaya	B3
Pulse Grande Hotel	C2
The Everly Putrajaya	C3
Shaftsbury Stellar Putrajaya	C3
Mihrab Hotel	D2
DoubleTree by Hilton	B4

## Legend

	Built-up Area
	Field / Recreation
	River / Lake
	Expressway
	Major Road
	Secondary Road
	Railway Route & Station
	Place of Interest
	Tourism Malaysia Office
	Tourist Information Centre
	Hotel
	Shopping
	Dining
	Hospital / Clinic
	Police Station
	Fire Station
	Bus Station
	Taxi Station
	Post Office
	Library
	Sports Complex
	Important Landmark, University / College
	Place of Worship
	Jetty